



CITY OF WASHINGTON, ILLINOIS
Public Works Committee Agenda Communication

Meeting Date: March 6, 2023

Prepared By: Dennis Carr, P.E. – City Engineer

Agenda Item: Hilldale Reconstruction Project – Phase 3 Alternate A

Explanation: Before the previous phase of Hilldale was bid out, City Staff had reached out to the property owners along the drainage channel that carries flow from the Reconstructed North Street Culvert to the culvert to be reconstructed in Phase 3 of Hilldale. There was mostly positive feedback at the time with some residents also asking for more information if the city were to move forward with the reshaping of this channel.

The channel currently doesn't have the capacity to carry a 2-year rain event, and Alternate A realigns and increases the carrying capacity to a 10-year event. If council were to approve of the ditch work, staff plans to reach out to the residents along the corridor to begin the conversations again.

Staff solicited bids for the reconstruction of Hilldale from Main St. to west of Ridge. Alternate A is reshaping the channel between North Street and Hilldale to provide sufficient capacity to handle a 10-yr storm event.

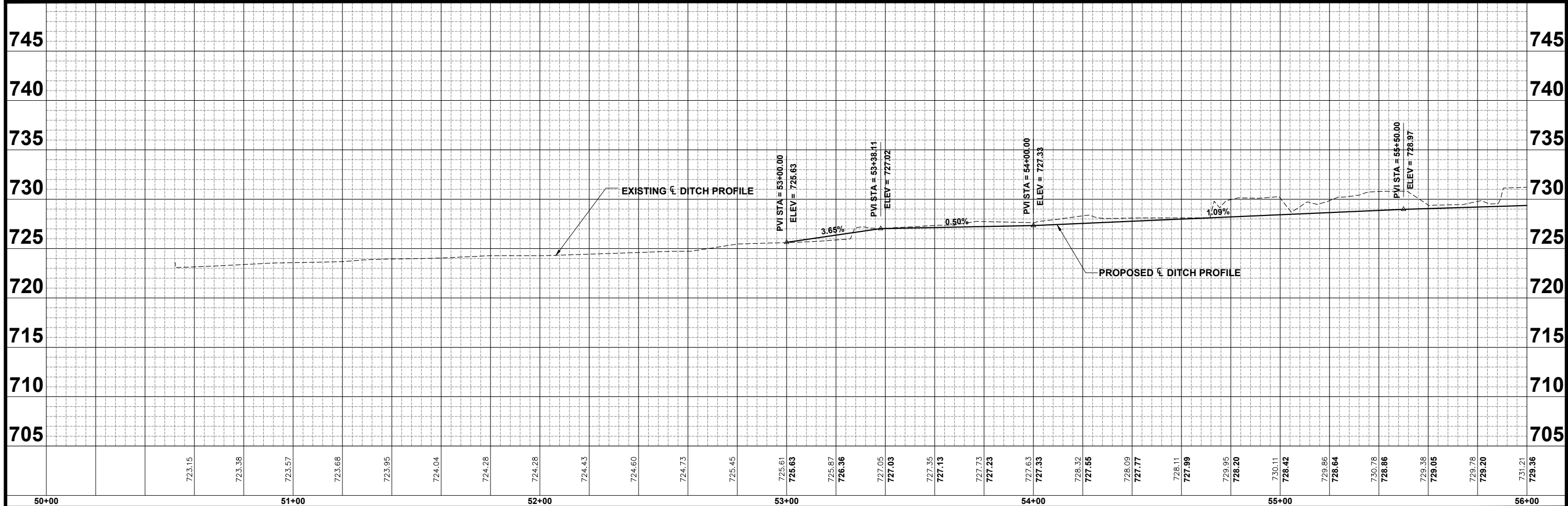
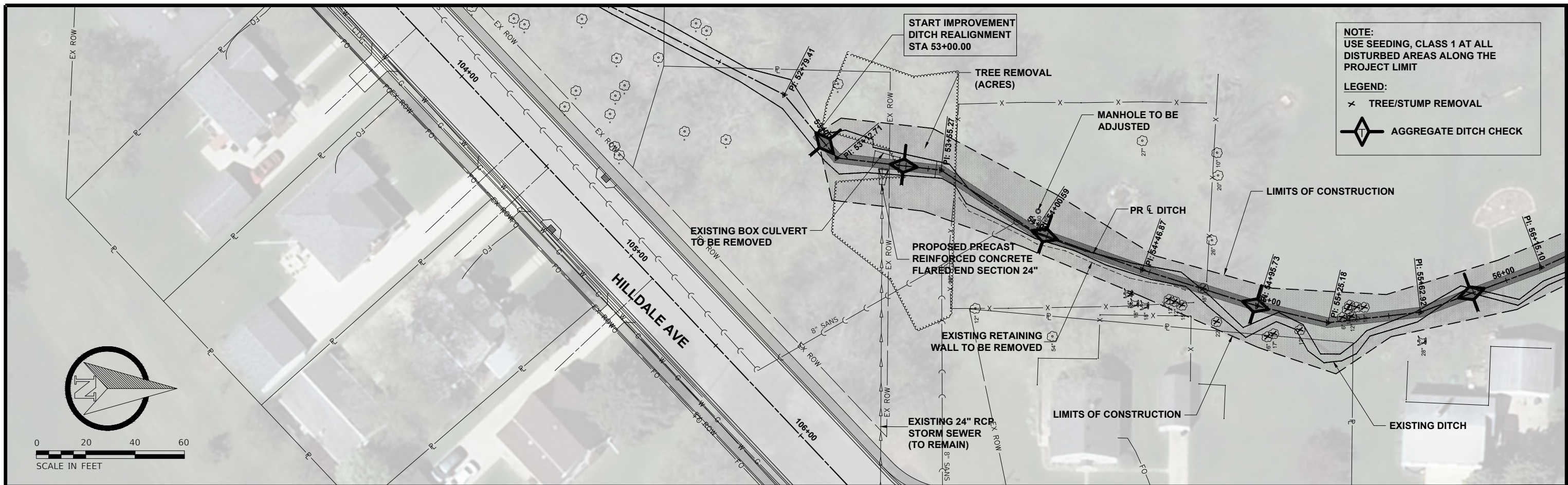
A bid opening took place on March 1, 2023 at 10 AM at City Hall with three bids submitted.

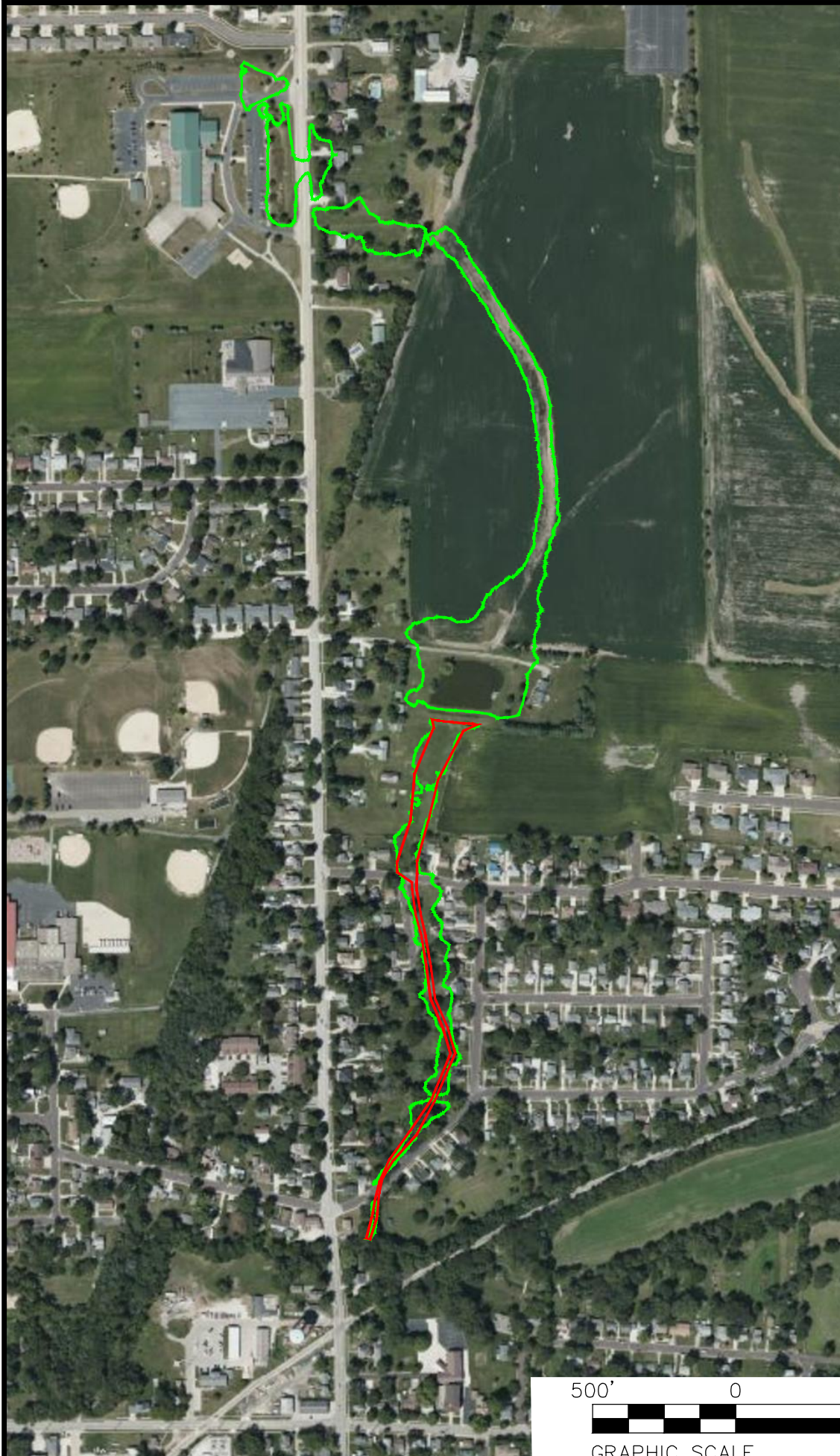
Company	Alternate A Amount
Stark Excavating	\$ 108,405.01
Otto Baum	\$ 150,750.00
ICCI	\$ 167,100.69
Engineers Estimate	\$ 153,797.00

Fiscal Impact: The FY 23-24 budget includes \$2,250,000 in the water/sewer/capital fund accounts. The combination of the base bid and alternatives A & B would come in under the budgeted amount.

Recommendation Summary: Staff recommends discussion on the inclusion of Alternate A and direction to engage with the property owners to get their blessing on the project.

Action Requested: Direction to begin discussion with the residents so that we can bring alternate A bid approval to a future council meeting for approval.





CONSULTING ENGINEERING
GEOSPATIAL SERVICES

ILLINOIS | SWANSEA
WATERLOO
EDWARDSVILLE
PEORIA

MISSOURI | ST. CHARLES
ST. LOUIS
COLUMBIA

TENNESSEE | NASHVILLE

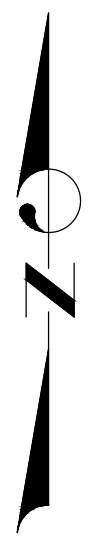
**THOUVENOT, WADE
& MOERCHEN, INC.**

PEORIA OFFICE
1014 W PIONEER PARKWAY, STE 100
PEORIA, ILLINOIS
61615
(309) 326-6030
WWW.TWM-INC.COM

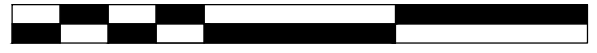
210206

PROJECT:
WASHINGTON DRAINAGE STUDY

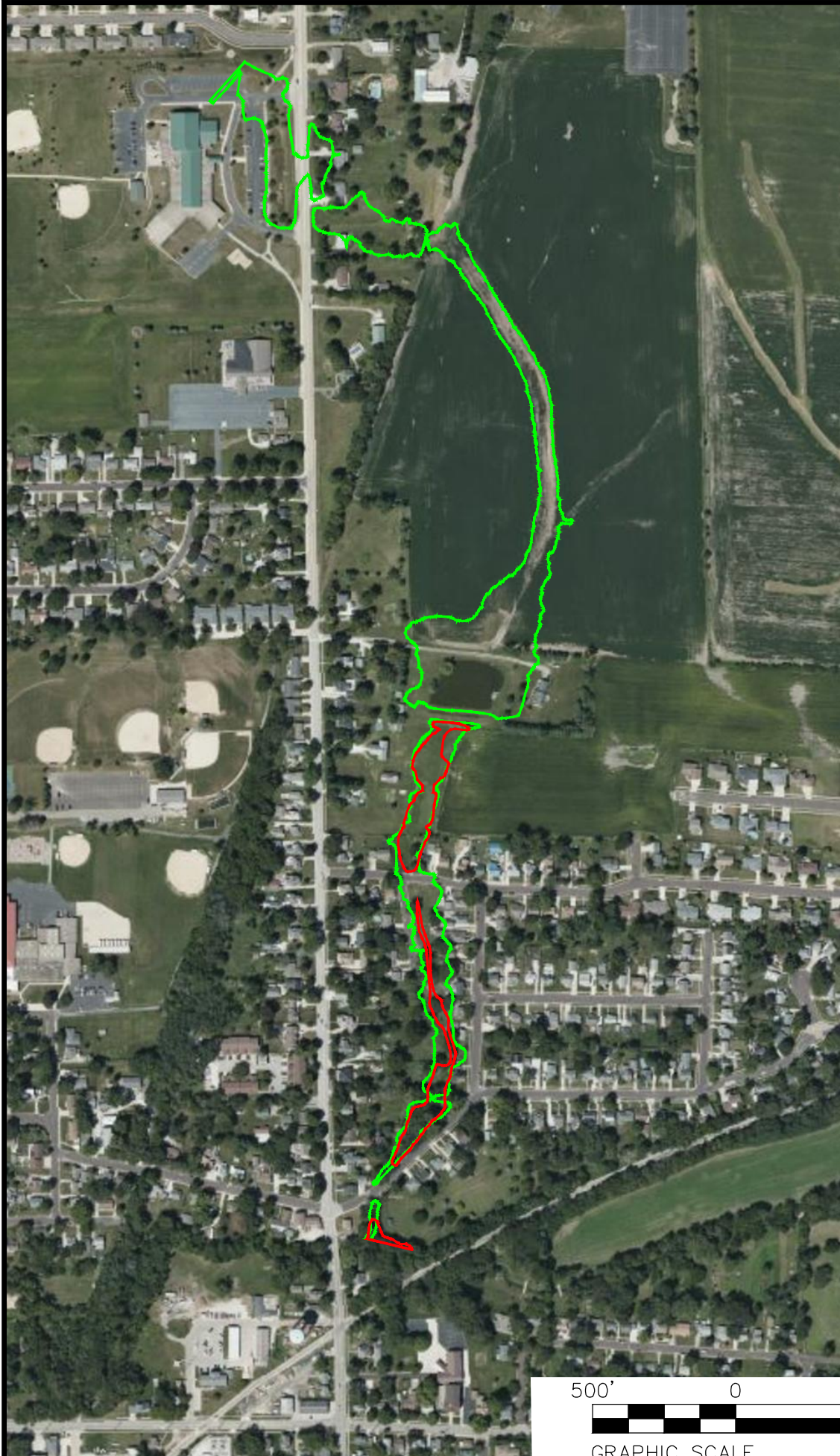
TITLE:
HILDALE DITCH MODIFICATION
2-YEAR STORM



500' 0 500' 1000'



GRAPHIC SCALE



CONSULTING ENGINEERING
GEOSPATIAL SERVICES

ILLINOIS | SWANSEA
WATERLOO
EDWARDSVILLE
PEORIA

MISSOURI | ST. CHARLES
ST. LOUIS
COLUMBIA

TENNESSEE | NASHVILLE

**THOUVENOT, WADE
& MOERCHEN, INC.**

PEORIA OFFICE
1014 W PIONEER PARKWAY, STE 100
PEORIA, ILLINOIS
61615
(309) 326-6030
WWW.TWM-INC.COM

210206

PROJECT:

WASHINGTON DRAINAGE STUDY

TITLE:

HILDALE DITCH MODIFICATION
10-YEAR STORM



500' 0 500' 1000'



GRAPHIC SCALE



CONSULTING ENGINEERING
GEOSPATIAL SERVICES

ILLINOIS | SWANSEA
WATERLOO
EDWARDSVILLE
PEORIA

MISSOURI | ST. CHARLES
ST. LOUIS
COLUMBIA

TENNESSEE | NASHVILLE

**THOUVENOT, WADE
& MOERCHEN, INC.**

PEORIA OFFICE
1014 W PIONEER PARKWAY, STE 100
PEORIA, ILLINOIS
61615
(309) 326-6030
WWW.TWM-INC.COM

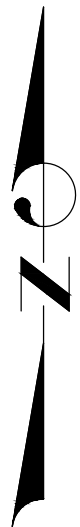
210206

PROJECT:

WASHINGTON DRAINAGE STUDY

TITLE:

HILLDALE DITCH MODIFICATION
100-YEAR STORM



500' 0 500' 1000'



GRAPHIC SCALE